

In-Production Photo Report for Brampton Fire & Emergency Services, ON Job# 44830 : PWO# 34656479

Status as of March 20, 2026

In this report your cab completed paint, the frame was staged no photos, the pump house continued initial assembly, and the body remained staged. In the next report your cab, frame, and body may remain staged while the pump house may be painted then staged to continue initial assembly.



For valued customers of
COMMERCIAL
EMERGENCY EQUIPMENT CO.



DSC07373



DSC07374



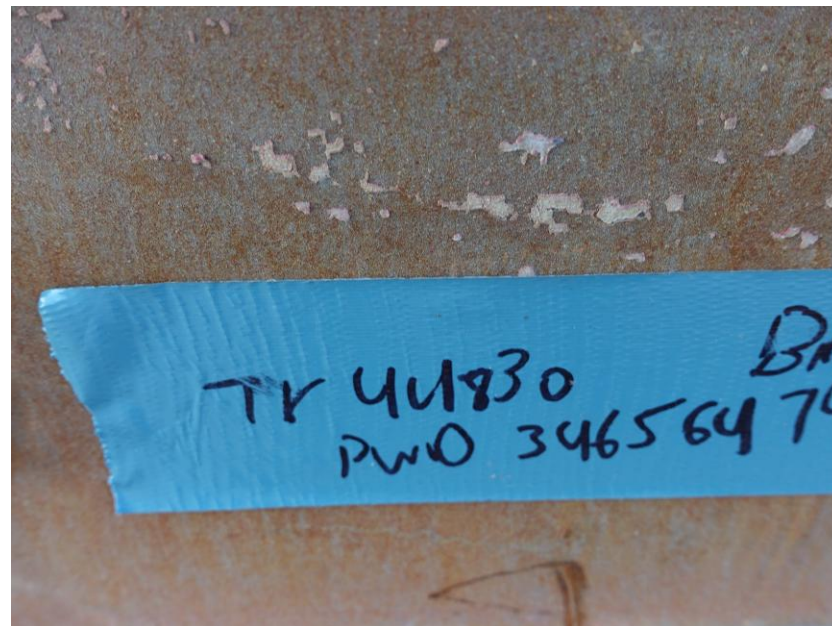
DSC07375



DSC07376



DSC07377



DSC07302



DSC07303



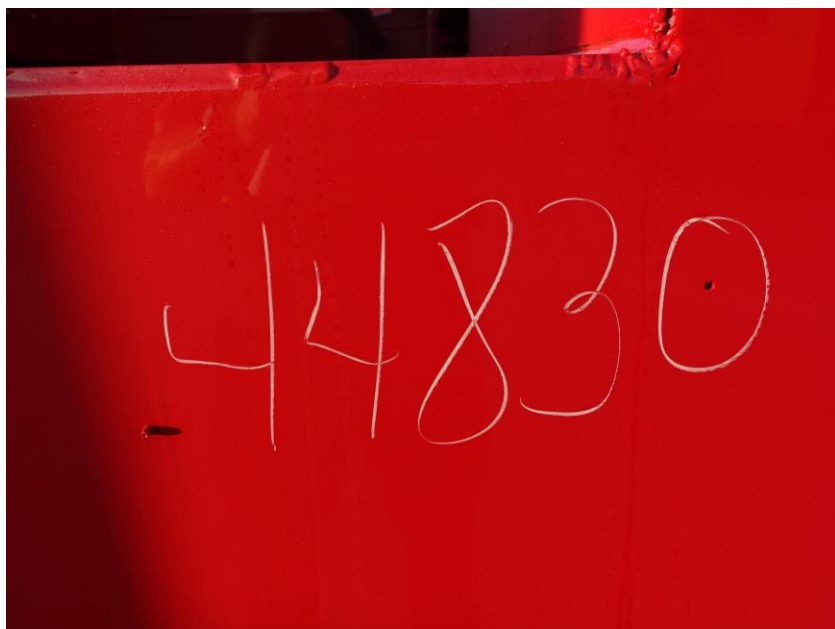
DSC07304



DSC07305



DSC07306



DSC07262



DSC07263



DSC07264



DSC07265



DSC07266