

# In-Production Photo Report for Brampton Fire & Emergency Services, ON Job# 44831 : PWO# 34656521

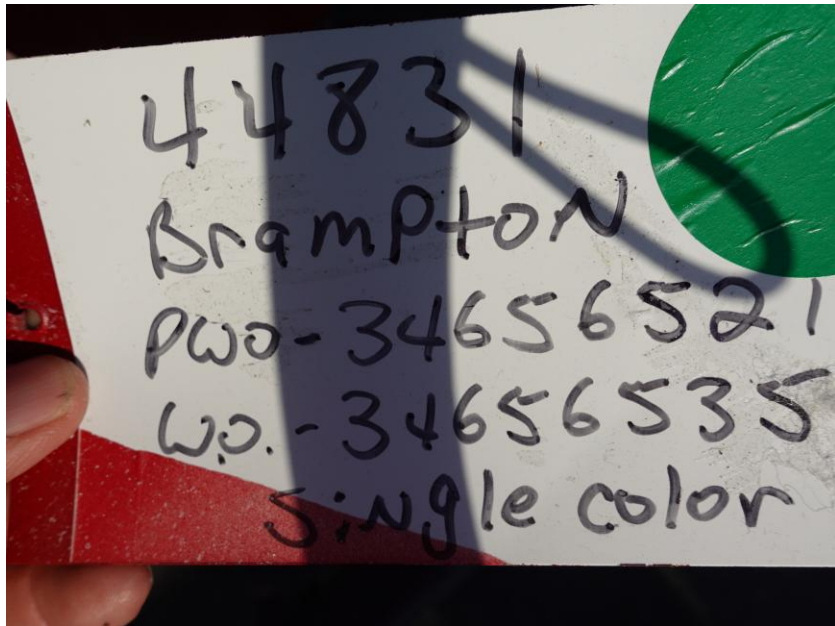
---

Status as of March 20, 2026

In this report your cab was staged, the frame was staged (no photos), the pump house continued initial assembly, and the body completed the paint process. In the next report your cab, frame, and body may remain staged while the pump house may be painted then staged to continue initial assembly.



*For valued customers of*  
**COMMERCIAL**  
EMERGENCY EQUIPMENT CO.



DSC07388



DSC07389



DSC07390



DSC07391



DSC07392



DSC07247



DSC07248



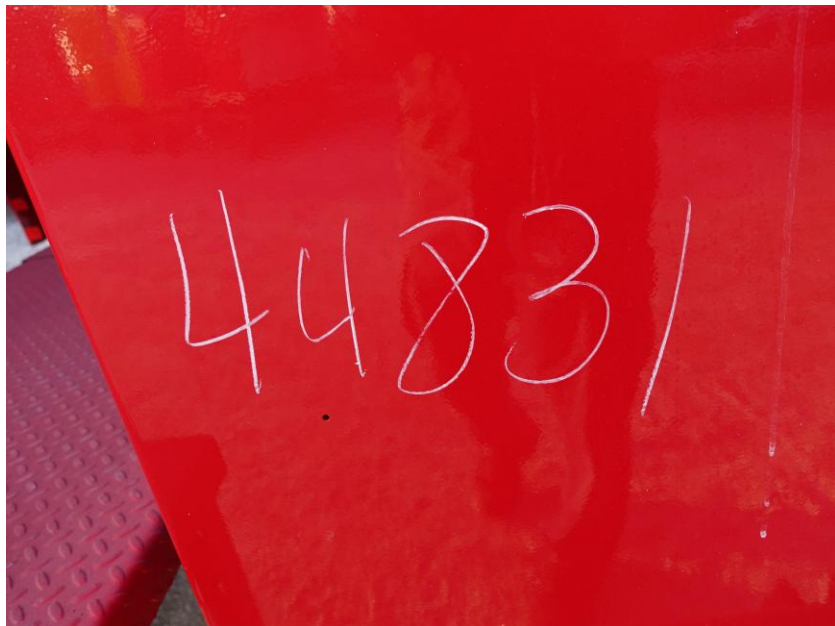
DSC07249



DSC07250



DSC07251



DSC07267



DSC07268



DSC07269



DSC07270



DSC07271