

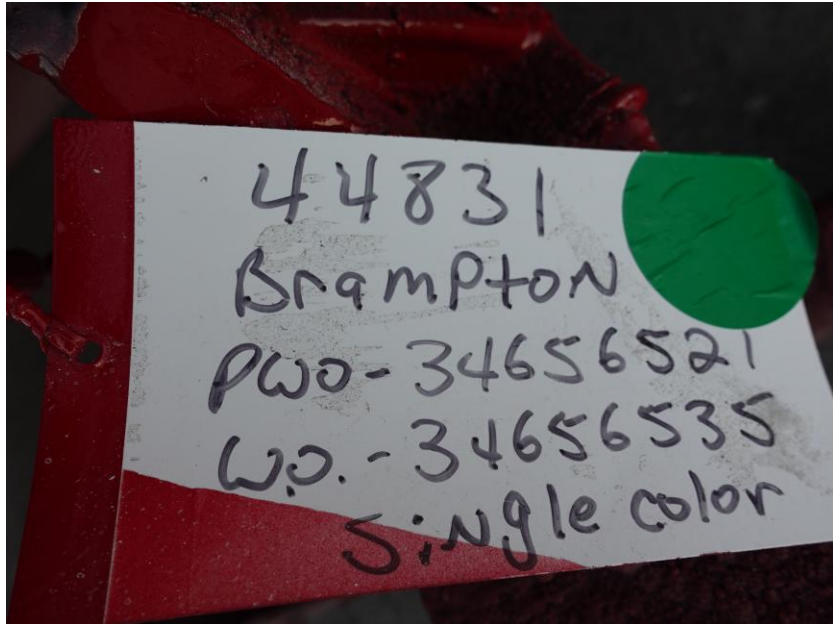
In-Production Photo Report for Brampton Fire & Emergency Services, ON Job# 44831 : PWO# 34656521

Status as of March 27, 2026

In this report your cab remained staged, the frame was staged (no photos), the pump house was painted then staged to continue initial assembly, and the body was staged to begin initial assembly. In the next report all components may remain staged.



For valued customers of
COMMERCIAL
EMERGENCY EQUIPMENT CO.



DSC07134



DSC07135



DSC07136



DSC07137



DSC07138



DSC07161



DSC07162



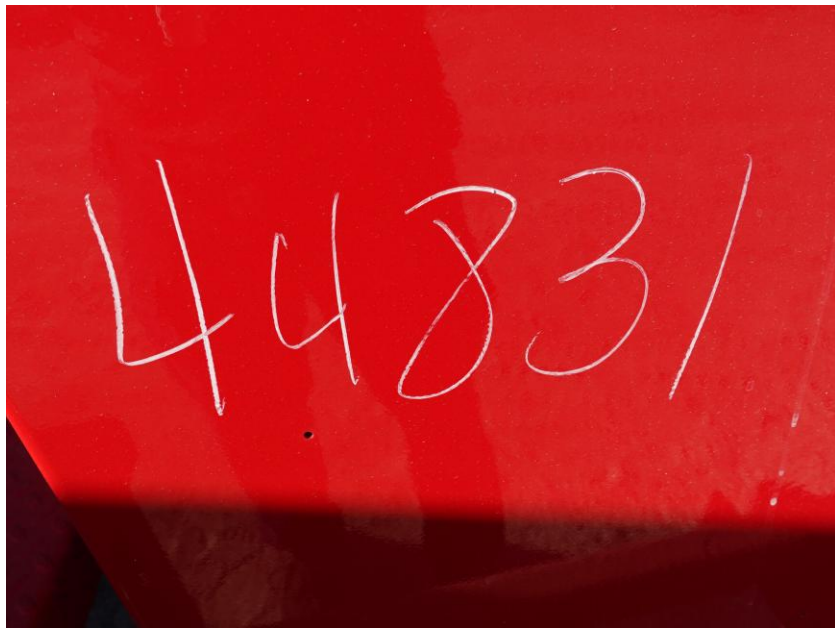
DSC07163



DSC07164



DSC07165



DSC07369



DSC07370



DSC07371



DSC07372



DSC07373