

In-Production Photo Report for Orangeville Fire Department, ON Job# 41091

Status as of April 03, 2026

In this report your cab completed paint while the pump house began initial assembly. In the next report your cab may be staged to begin initial assembly while the pump house may continue initial assembly.



For valued customers of
COMMERCIAL
EMERGENCY EQUIPMENT CO.



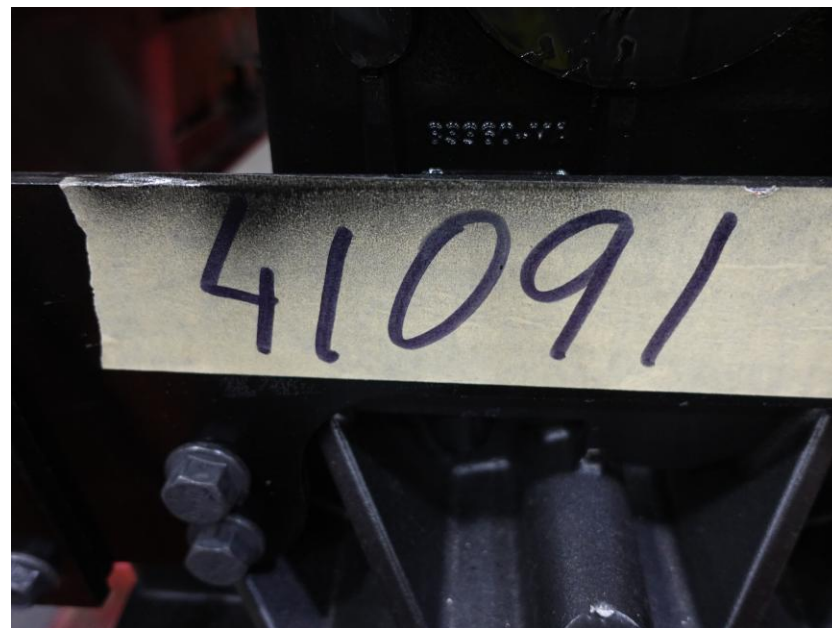
DSC03004



DSC03005



DSC03006



DSC04031



DSC04032



DSC04033